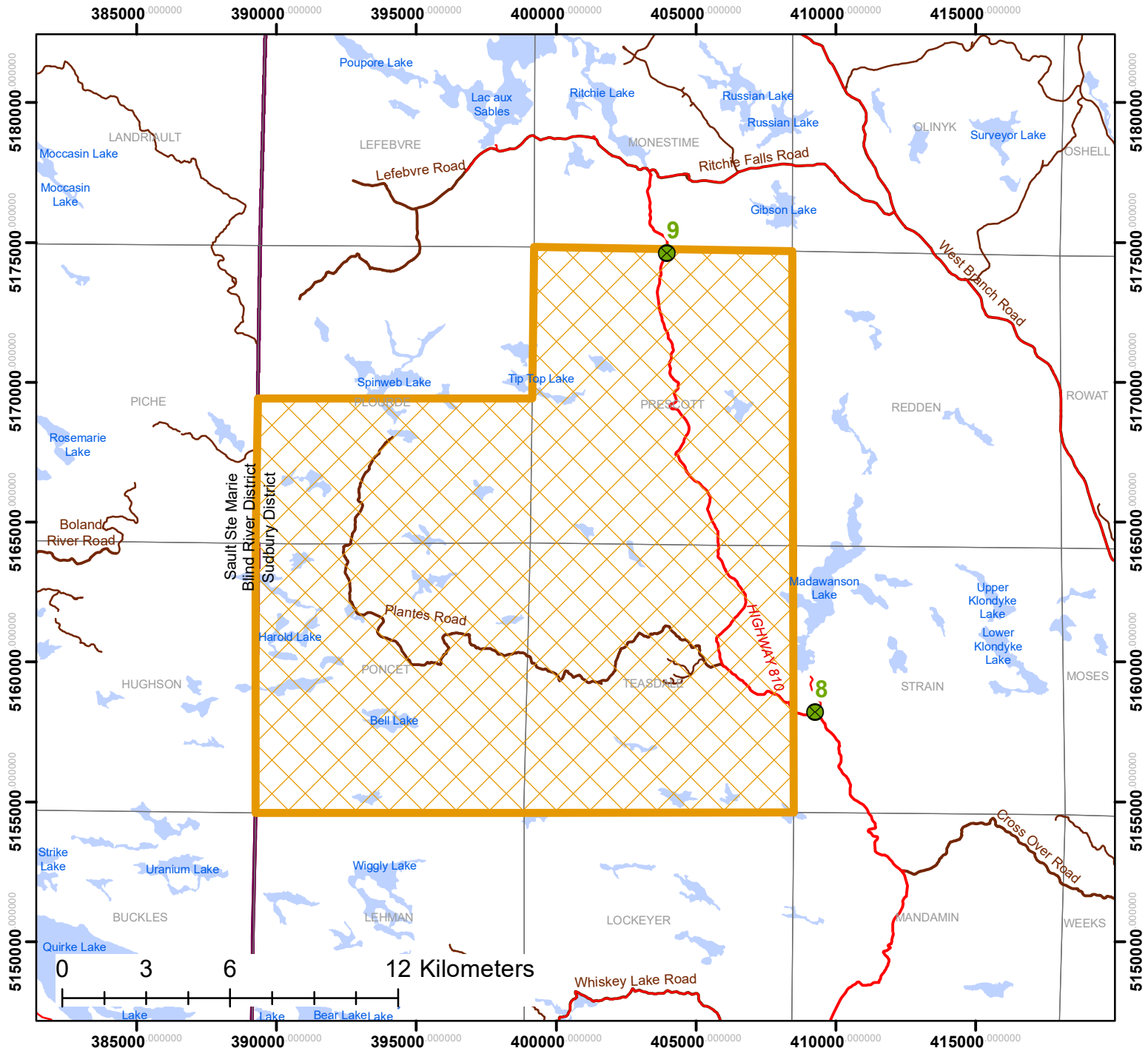


# Emergency Area Order EAO-2023-004 (Implementation Order Map)



## Access Restriction Key

- 8: Hwy 810 @ Madawanson cottage road
- 9: Hwy 810 @ Prescott TWP boundary

**(Madawanson cottage road open to travel)**

Questions relating to forest fires and fire activity:  
MNR Forest Fire and Emergency Services  
1-888-220-7242

Questions relating to implementation and evacuation orders:  
MNR Sudbury District  
705-564-7850

Date Produced: June 15, 2023  
Coordinate System : NAD 1983 UTM Zone 17N  
Projection: Transverse Mercator  
Datum: North American 1983  
Data Sources : Base Data - Land Information Ontario

## IO-2023-Sudbury-009 (Travel Restriction)



- Access Restriction
  - Communities
  - Travel Restriction
  - Railway
  - Township
  - MNR District
  - Waterbody (1:500000)
- ORN Roads**
- Arterial
  - Local
- Forestry Roads**
- Primary
  - Branch



1:200,000



This map should not be relied on as a precise indicator of routes or locations, nor as a guide to navigation. The Ontario Ministry of Natural Resources and Forestry (MNR) shall not be liable in any way for the use of, or reliance upon, this map or any information on this map.